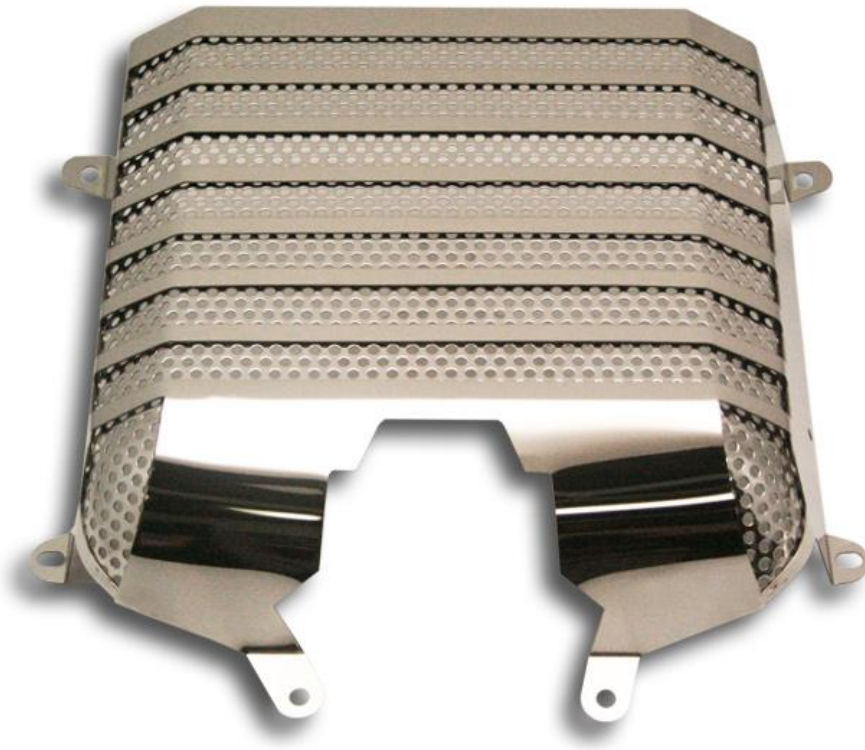




## AMERICAN CAR CRAFT INSTRUCTIONS

---

### ***CAMARO ZL1 ENGINE PLENUM COVER PART #103059***



#### **PARTS INCLUDED:**

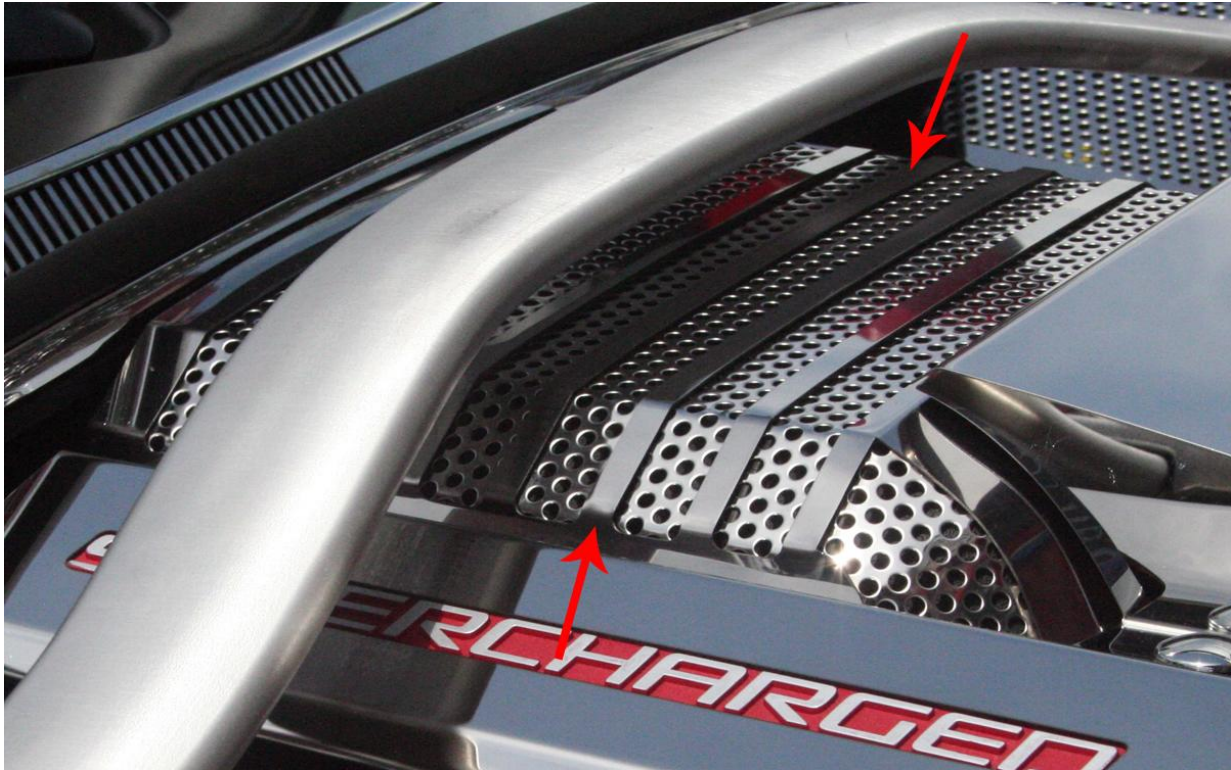
- 1-Plenum Cover
- 2- M6 x 25 HEX Flange Head Bolts

**Introduction:** This new accessory has been designed to fit directly over the top of the factory plenum cover and is not a replacement.

**Liner Information:** Your new accessories will come to you with a protective surface liner. Leave this liner in place until the installation is complete to prevent finger prints and or possible scratches during installation.

1. Remove the strut brace.
2. Remove the factory Red plastic Engine Shroud by pulling it up and from its attachment tabs.
3. Use the Plenum Cover as a guide to locate the (4) side bolts used to attach the Plenum Cover.
4. Set the Plenum Cover aside for now and remove the (4) side bolts and save for re-installing.

5. Place the Plenum Cover on top of the factory Plenum and re-install the (4) factory bolts. Torque the (4) bolts down to **106 inch pounds** using an x-pattern.
6. Install the (2) front Plenum Cover bolts and torque down until snug. **Do not over tighten.**
7. Re-install the factory Red plastic Engine Shroud by pushing it down onto its attachment tabs.



Please call American Car Craft at 727.861.1500 if you have any questions during installation.

Thank you and enjoy your purchase!

American Car Craft LLC  
18924 Sakera Rd Hudson, FL. 34667  
Ph 727.861.1500 Fax 727.861.1520  
[www.americancarcraft.com](http://www.americancarcraft.com)