



Doorsills Polished/Carbon Fiber Challenger Style
Illuminated 2pc
2008-2015



AMERICAN CAR CRAFT INSTRUCTIONS

2008-2015 Challenger Illuminated Doorsills Install Guide Part #151047



PARTS INCLUDED:

- 2-Doorsills
- 2-Packs of Adhesive Promoter

Do not remove protective liner until instructed to do so.

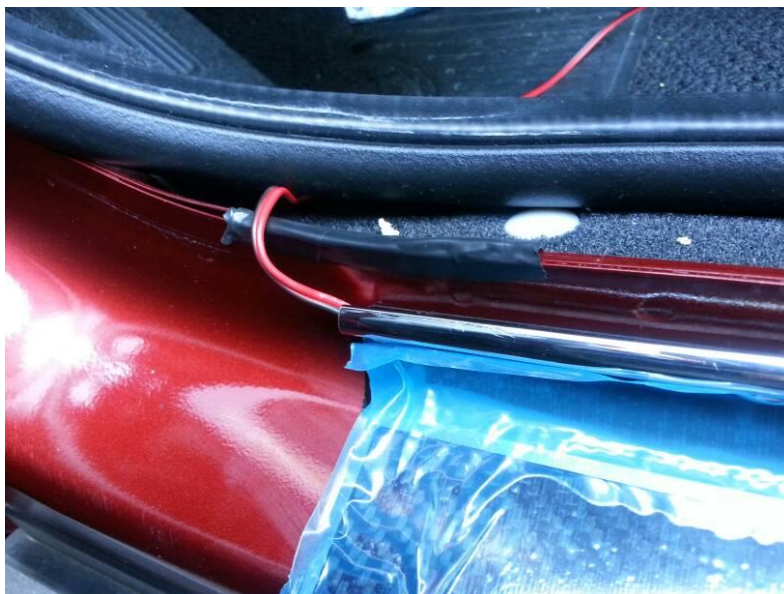
Introduction: In the next few paragraphs we will explain to you what you will need to know and do for a successful application of ACC Stainless Steel Accessories.

Liner info: Your new accessories will come to you with a protective surface liner. Leave this liner in place until the installation is complete to prevent fingerprints and or possible scratches during installation. This liner is required to remain on the part until you are instructed to remove it.

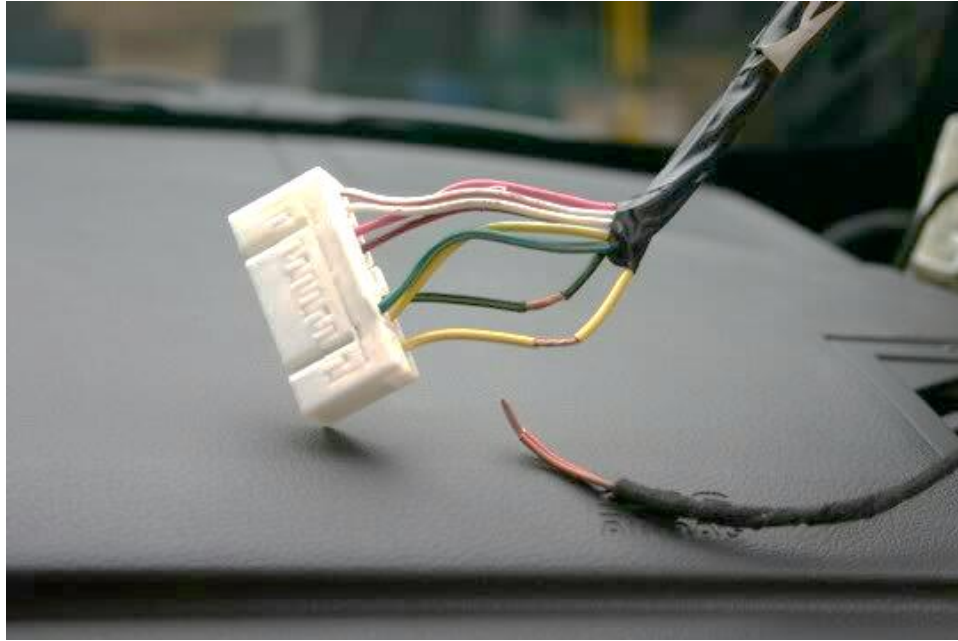
Wiring your new doorsills:

The following is intended as a guide only. There are many ways you can potentially wire power to your new custom doorsills.

1. The doorsill lines up in the center of the door. Pull up the black rubber weather seal. Run the wire from the doorsill underneath the weather seal. Push the weather seal back down into place. This will get the wires from the door sill inside the cab of the vehicle. Locate the courtesy foot lamp. There is a courtesy foot lamp located in both the drivers and passenger side foot wells.



2. There should be **Orange** and **Brown** wires that supply power to the courtesy foot lamp. The **Orange** wire is positive (+) and the **Brown** wire is negative (-). The next step is to connect the solid **Red** (+) wire from the door sill to the **Orange** positive (+) wire on the courtesy foot lamp. Then connect the **Red** and **Black** negative (-) wire from the door sill to the **Brown** negative (-) wire on the foot lamp. This is achieved by tapping into the wires that supply power to the courtesy foot lamps. Repeat the same steps on the opposite side of the vehicle. When complete both courtesy foot lamps should still function.



3. **Special Note: 2014 and prior models will require you to tap into the dome light. The wires for this connection are in the passenger pillar post.**

***Although the courtesy foot lamps are on a switch, this will have no bearing on the operation of the LED lights on the door sill. This switch will control the LED lights on the door sill, just as it controls the courtesy foot lamps. All the operational features of the courtesy foot lamps will continue to work and the LED lights on the door seal will mimic those same features. ***

Attaching your new doorsills:

1. The first thing that needs to be done in any peel and stick application is surface preparation. It is important that you examine the surface to determine if any kind of special treatments have ever been used. Such as wax/silicone treatments and/or polymer surface preps. Take a strip of masking tape and press it very firmly to make it adhere to the surface. Then peel it off to see how difficult it is to remove. If your masking tape is removed extremely easy and/or does not stick at all then you will need to perform a special surface preparation. In most cases like this, you will need to make a solution of a straight detergent (Johnson's Baby Shampoo or Palmolive Dish Soap) and water. Mix a 32oz bottle with about five tablespoons of soap detergent. Once you have the solution made wash the surface scrubbing quite vigorously to remove any surface contaminants. When this is done, you can proceed to the regular preparation. This is done by scrubbing the surface with alcohol and wiping it dry. At this point, you will need to test the surface again to see if you have achieved a tack. Apply a new strip of masking tape to the surface. If it adheres you have done a good job, if it doesn't then you must perform the wash again and again if necessary until you have achieved a nice tack. Once a tack has been achieved swipe the entire surface to be mounted with the adhesive promoter you will receive with any of our stainless-steel kits. This promoter is not a cleaner but an adhesive accelerator, when used on a nice clean and well-prepared surface this chemical, will create a very reliable bondable surface.

2. Now that you have a good surface prep you can peel the red release liner from the back of the part. Keep in mind that the adhesive is very aggressive and it will not allow you to reposition it once it has contacted the surface. So, go slow and sure. Once the perimeters are lined up, set the part in place pressing firmly along the entire surface to bond the part and then remove the protective liner. **The bond will become permanent after twenty-four hours.**
3. You can now safely remove your protective liner and enjoy your handcrafted custom part!

Thank you and enjoy your purchase!

If any questions occur during installation, please contact

AMERICAN CAR CRAFT

18924 SAKERA ROAD-HUDSON FLORIDA 34667

Phone # 727-861-1500 Fax # 727-861-1520

www.americancarcraft.com



AMERICAN CAR CRAFT INSTRUCTIONS

2015 Challenger Door Sills Wiring Guide Part #151047

Do not remove protective liner until instructed to do so.

Liner info: Your new accessories will come to you with a protective surface liner. Leave this liner in place until the installation is complete to prevent finger prints and or possible scratches during installation. This liner is required to remain on the part until you are instructed to remove it.

The following is intended as a guide only. There are many ways you can potentially wire power to your new custom door sills.

1. The door sill lines up in the center of the door. Pull up the black rubber weather seal. Run the wire from the door sill underneath the weather seal. Push the weather seal back down into place. This will get the wires from the door sill inside the cab of the vehicle. Locate the courtesy foot lamp. There is a courtesy foot lamp located in both the driver's and passenger side foot wells.
2. There should be **Orange** and **Brown** wires that supply power to the courtesy foot lamp. The **Orange** wire is positive (+) and the **Brown** wire is negative (-). The next step is to connect the solid **Red** (+) wire from the door sill to the **Orange** positive (+) wire on the courtesy foot lamp. Then connect the **Red** and **Black** negative (-) wire from the door sill to the **Brown** negative (-) wire on the foot lamp. This is achieved by tapping into the wires that supply power to the courtesy foot lamps. Repeat the same steps on the opposite side of the vehicle. When complete both courtesy foot lamps should still function.
3. **You can now safely remove your protective liner and enjoy your handcrafted custom part.**

Although the courtesy foot lamps are on a switch, this will have no bearing on the operation of the LED lights on the door sill. This switch will control the LED lights on the door sill, just as it controls the courtesy foot lamps. All the operational features of the courtesy foot lamps will continue to work and the LED lights on the door seal will mimic those same features.

Thank you and enjoy your purchase!
If any questions occur during installation, please contact

AMERICAN CAR CRAFT

Phone # 727-861-1500

www.americancarcraft.com